



**CALIFORNIA**  
**WILDFIRE & FOREST RESILIENCE**  
**TASK FORCE**

# Task Force Overview

**Patrick Wright**  
May 2026



# CALIFORNIA'S WILDFIRE & FOREST RESILIENCE ACTION PLAN



A COMPREHENSIVE STRATEGY  
OF THE GOVERNOR'S  
FOREST MANAGEMENT  
TASK FORCE

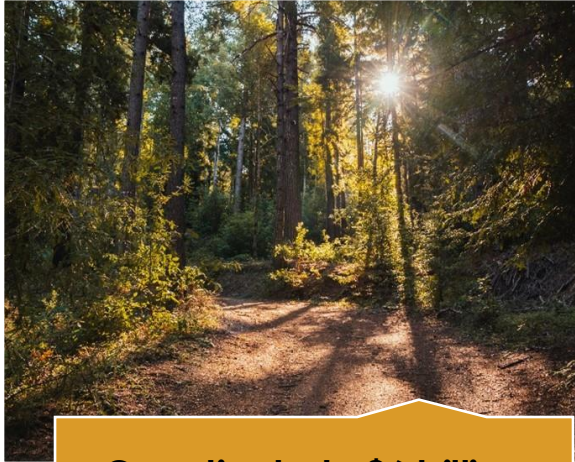
## Task Force Goals:

- Oversee the nation's most comprehensive action plan
- Provide a comprehensive, science-based framework for wildfire & landscape resilience
- Align agencies & grow regional partnerships
- Develop interagency tools to measure progress & accelerate landscape health and community resilience

# Task Force Regional Meetings



# Shared Accomplishments Since 2021



**Coordinated ~\$6 billion federal & state investments**



**Treated >700,000 acres annually, including doubling of Rx fire**

Fast-Tracking Critical Fuels Reduction Projects:  
**REQUESTS TO SUSPEND STATE STATUTES AND REGULATIONS**

**Governor Newsom Extends Key Provision to Continue Fast-tracking Wildfire Projects**

Eligible projects can now be initiated through May 1, 2026. To date, nearly 240 projects covering more than 40,000 acres have been approved statewide.

**Streamlined processes**

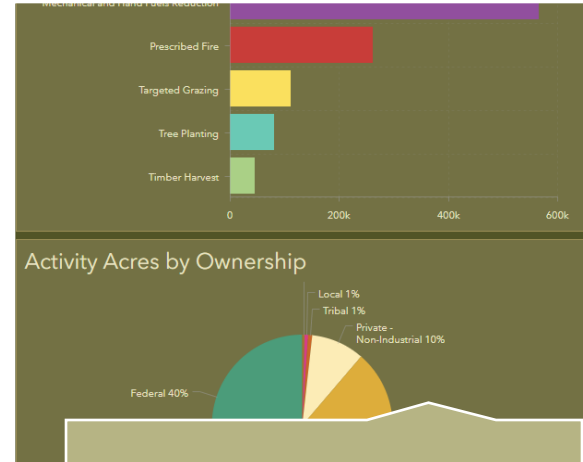


**Built regional capacity**

**RESILIENCE TASK FORCE**

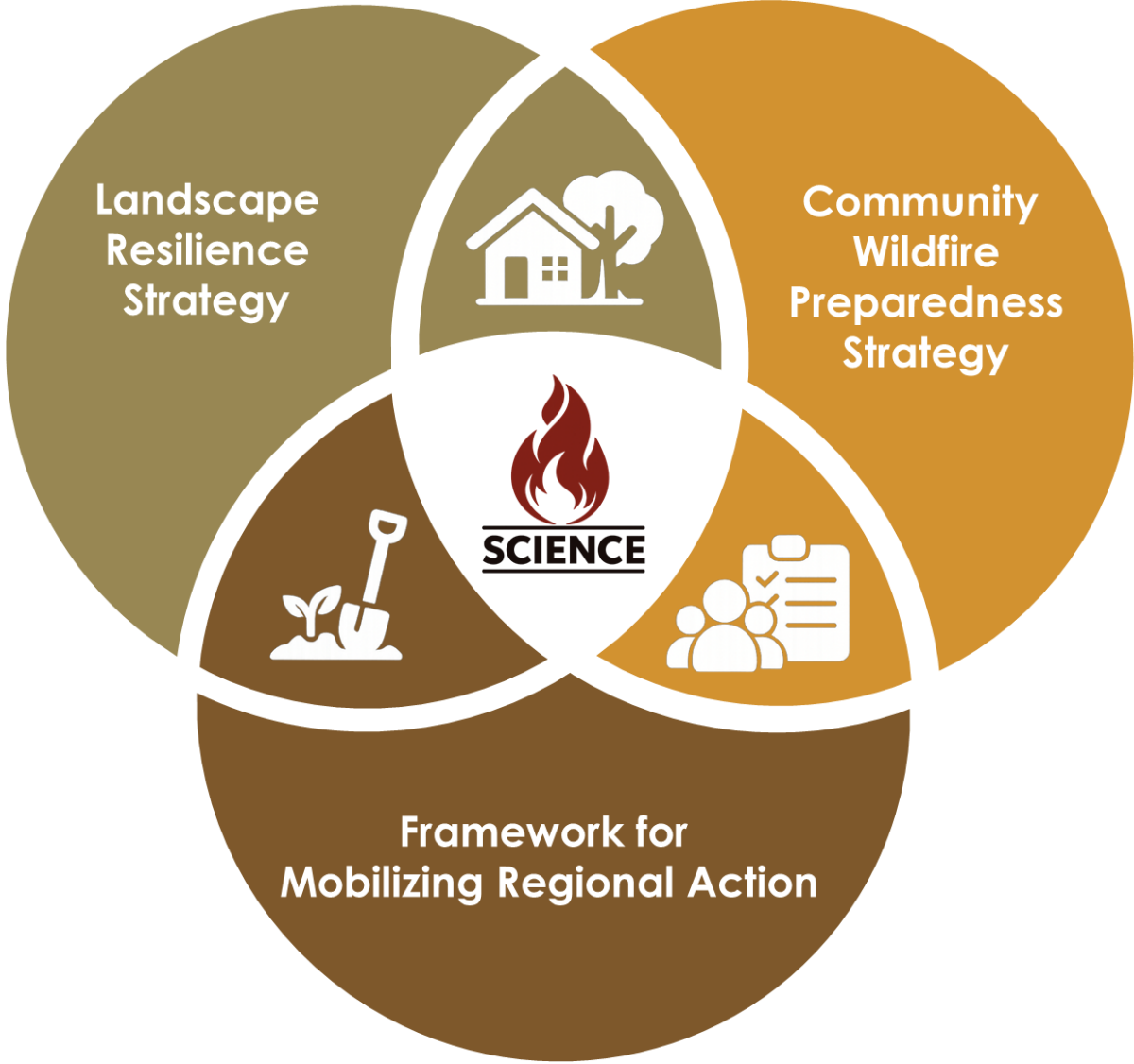
**CALIFORNIA'S JOINT STRATEGY FOR SUSTAINABLE OUTDOOR RECREATION & WILDFIRE RESILIENCE**

**Developed a broad range of interagency strategies**



**Developed new data & tools**

# 2026 Action Plan





# Community Wildfire Preparedness Strategy



- Harden structures & create defensible space
- Strengthen community-wide preparedness programs
- Reduce unwanted ignitions
- Focus treatments around communities & critical infrastructure



# Northern California



Increase thinning & beneficial fire/Build fuel break network



Strengthen community & home resilience programs



Accelerate reforestation



Expand wood utilization programs

# Southern California



Conserve montane forests



Strengthen community & home resilience programs



Reduce ignitions from roadways & utility corridors



Protect and restore chaparral & shrublands



# Tracking Progress: Interagency Treatment Dashboard



## Interagency Treatment Dashboard

Data Refreshed 12/13/2024, Version 1.1.1

Calendar Year  
2023

Counties  
All Counties

Regions  
All Regions

Entity Type  
All Entity Types

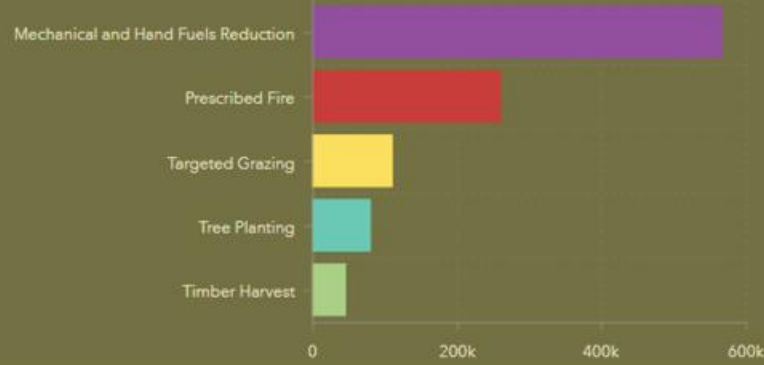
Land Ownership Group  
All Ownership

Administering Organization	Activity Acres
U.S. Forest Service	256,798
Timber Companies	234,729
CAL FIRE	157,585
CA Department of Transportation	135,941
CA Department of Fish and Wildlife	117,383
U.S. Fish and Wildlife Service	80,618
Bureau of Land Management	24,639
CA State Parks	14,582
Bureau of Indian Affairs	8,145
US Department of Energy	7,187
National Park Service	4,754
Sierra Nevada Conservancy	4,603
CA Wildlife Conservation Board	4,552
U.S. Department of Defense	1,883
San Diego River Conservancy	1,847
CA Conservation Corps	1,020
<b>Total</b>	<b>1,058,306</b>

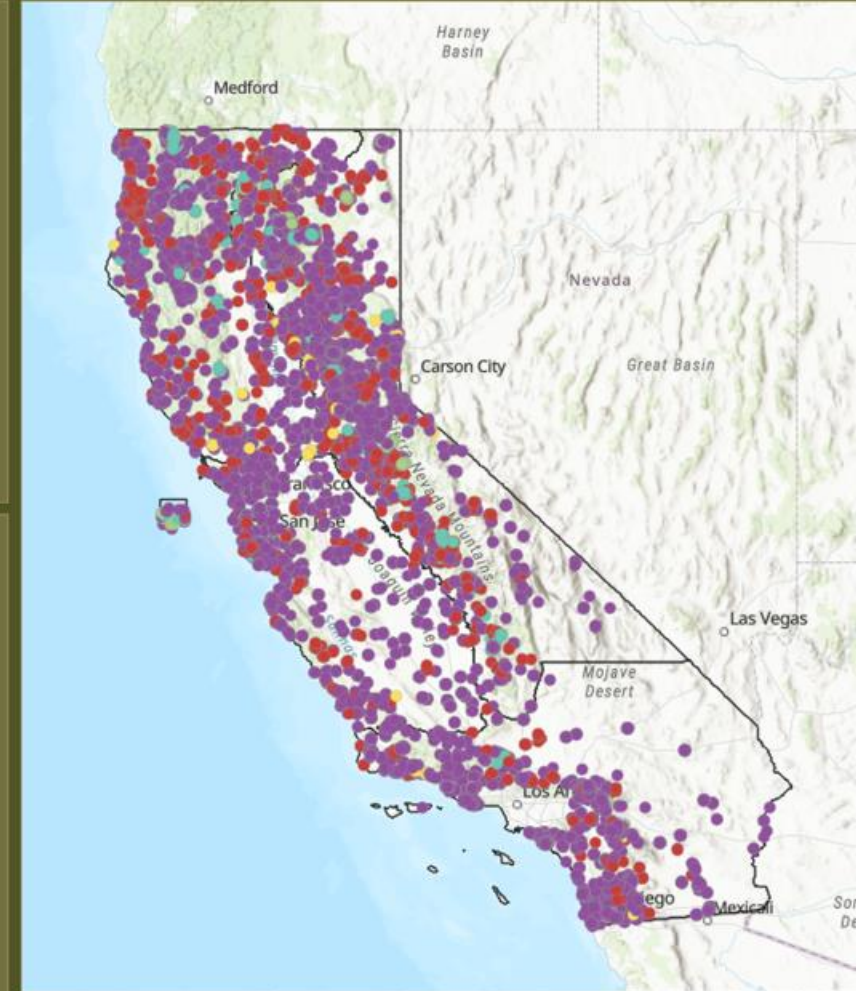
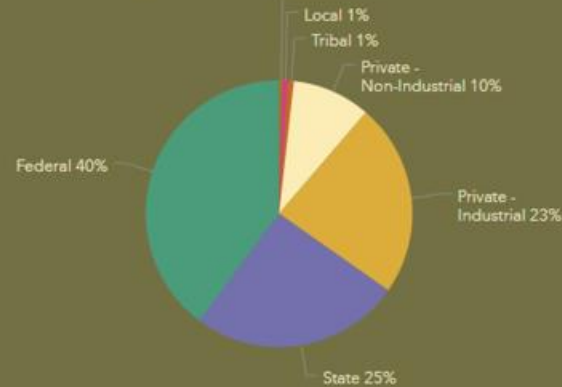
Reporting Entity Data Notes [\(Click Here\)](#)

### Activity Category

What is in these categories? [\(Click Here\)](#)

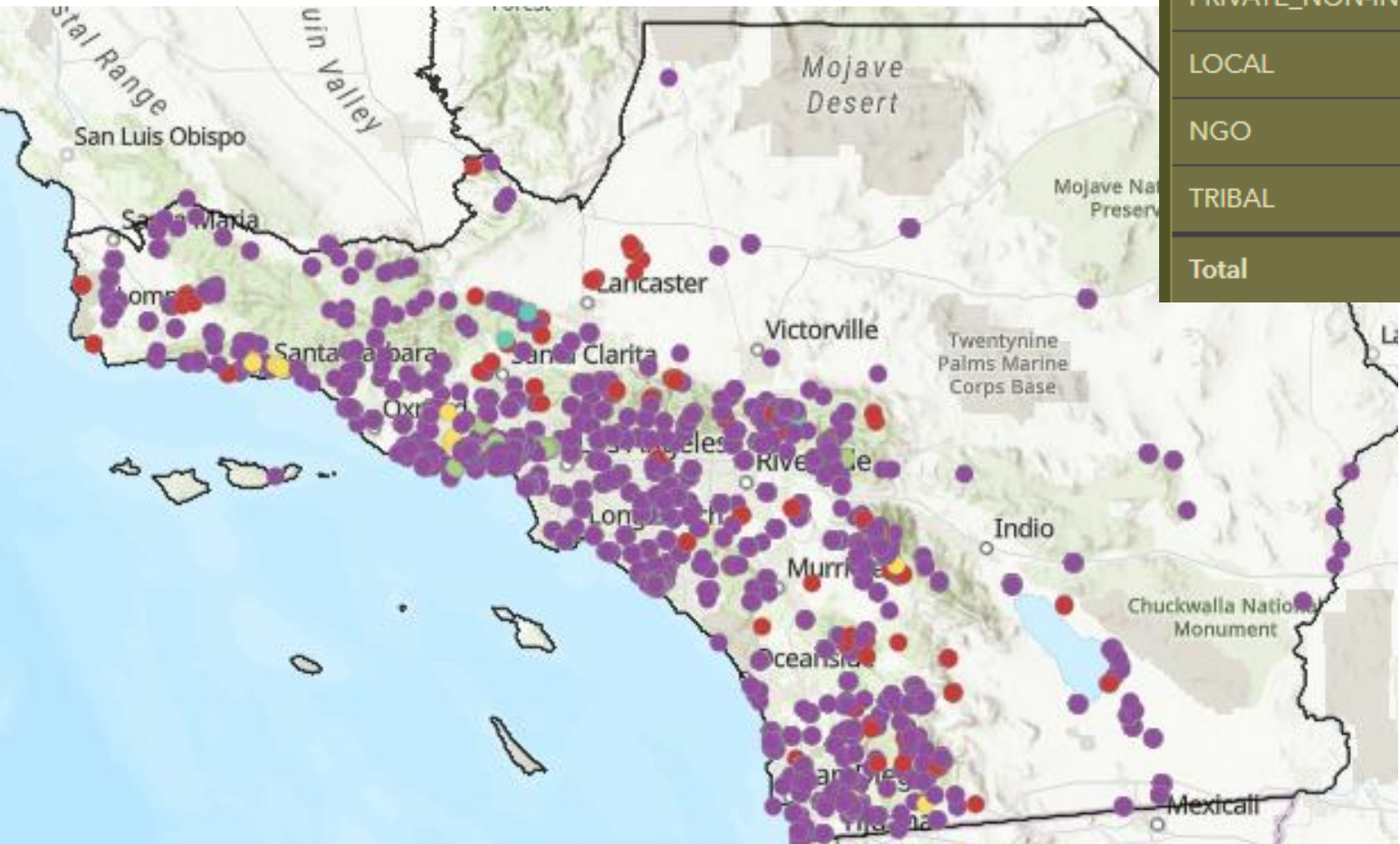


### Activity Acres by Ownership



Esri, USGS | Mono County, California State Parks, Esri, TomTom, Garmin, FAO, NOAA... Powered by Esri

# Regional Resilience Framework



Land Ownership	Footprint Acres
FEDERAL	21,655
STATE	8,825
PRIVATE_NON-INDUSTRY	4,930
LOCAL	1,357
NGO	785
TRIBAL	409
<b>Total</b>	<b>37,961</b>

# Southern CA Wildfire Resilience Partnership

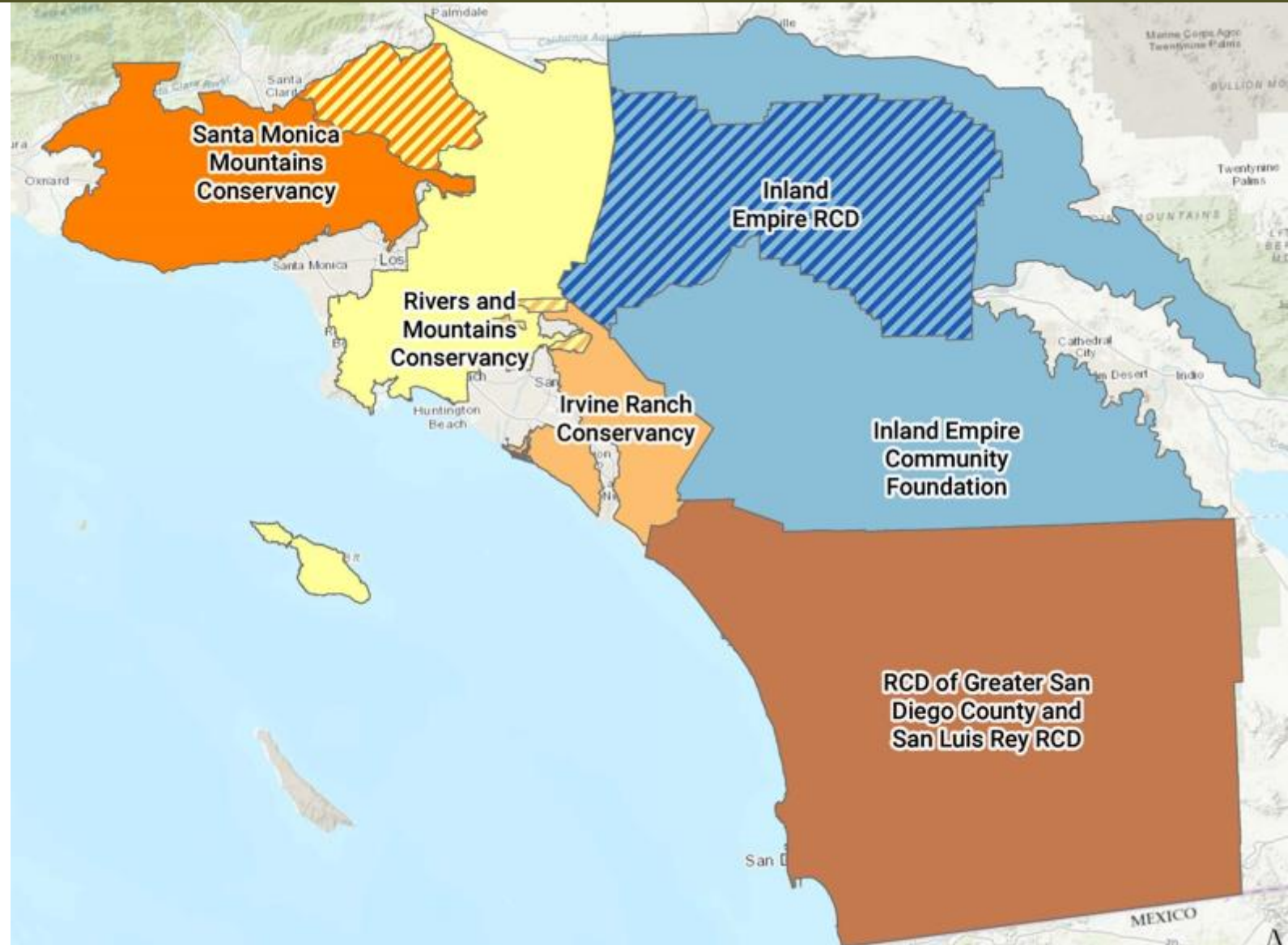


## \$10M Award to RCD of Greater San Diego County:

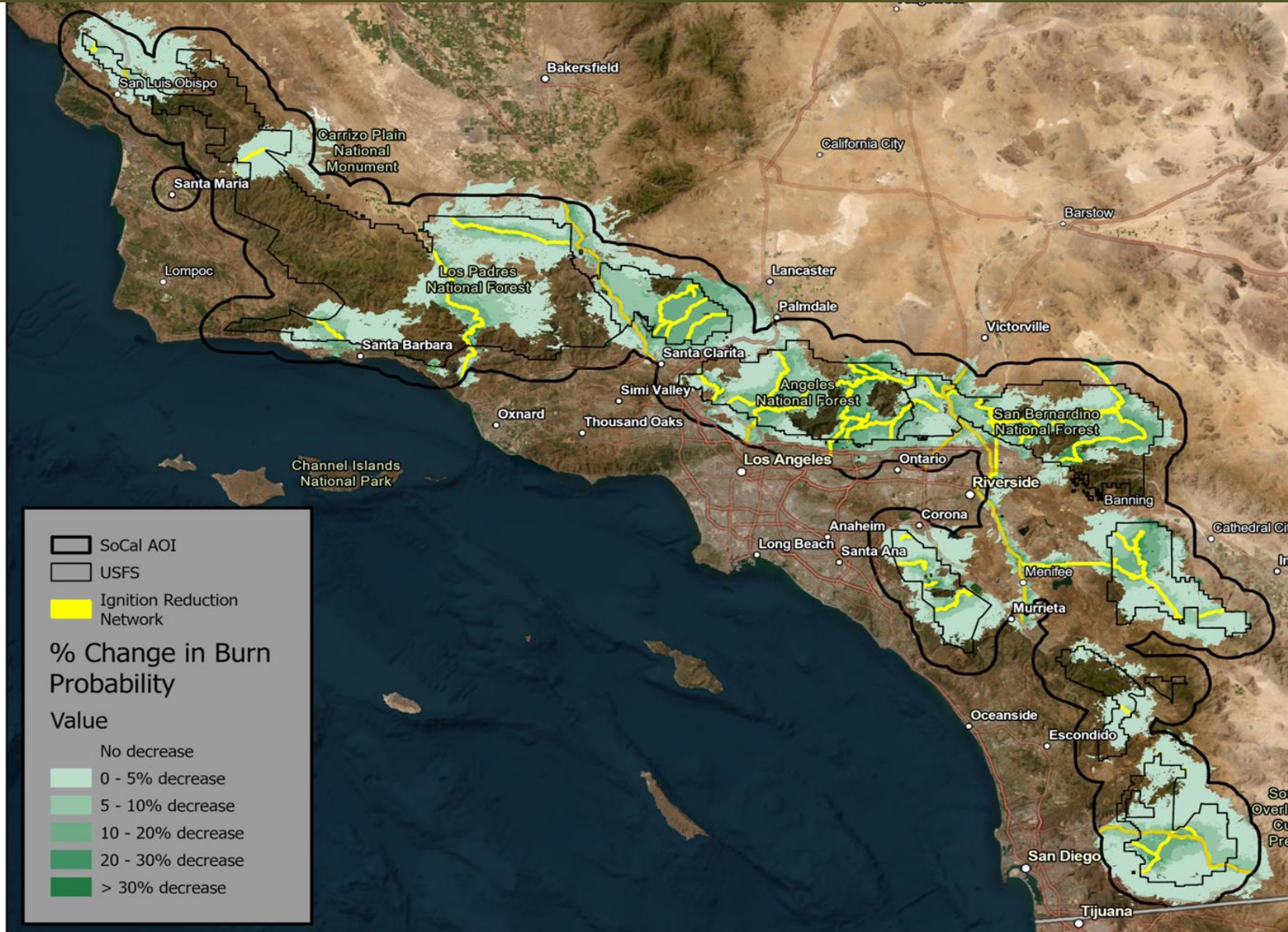
- \$5M CAL FIRE Forest Health
- \$5M CAL FIRE Wildfire Prevention

## SoCal Wildfire Resilience Partnership Portfolio:

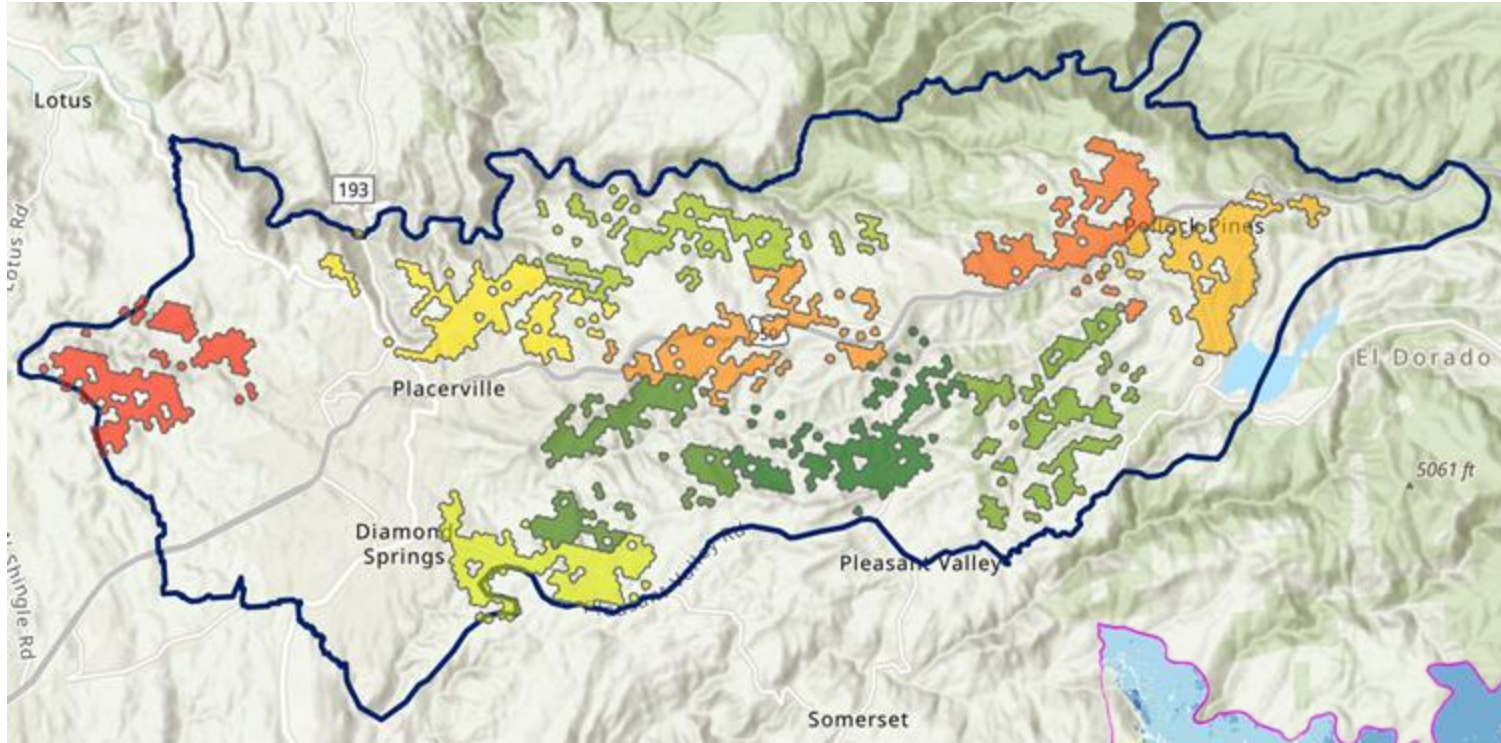
- 6 subregional grants
- 23 implementation sites
- 20+ implementation partners
- Proposed 2,680 acres of treatments



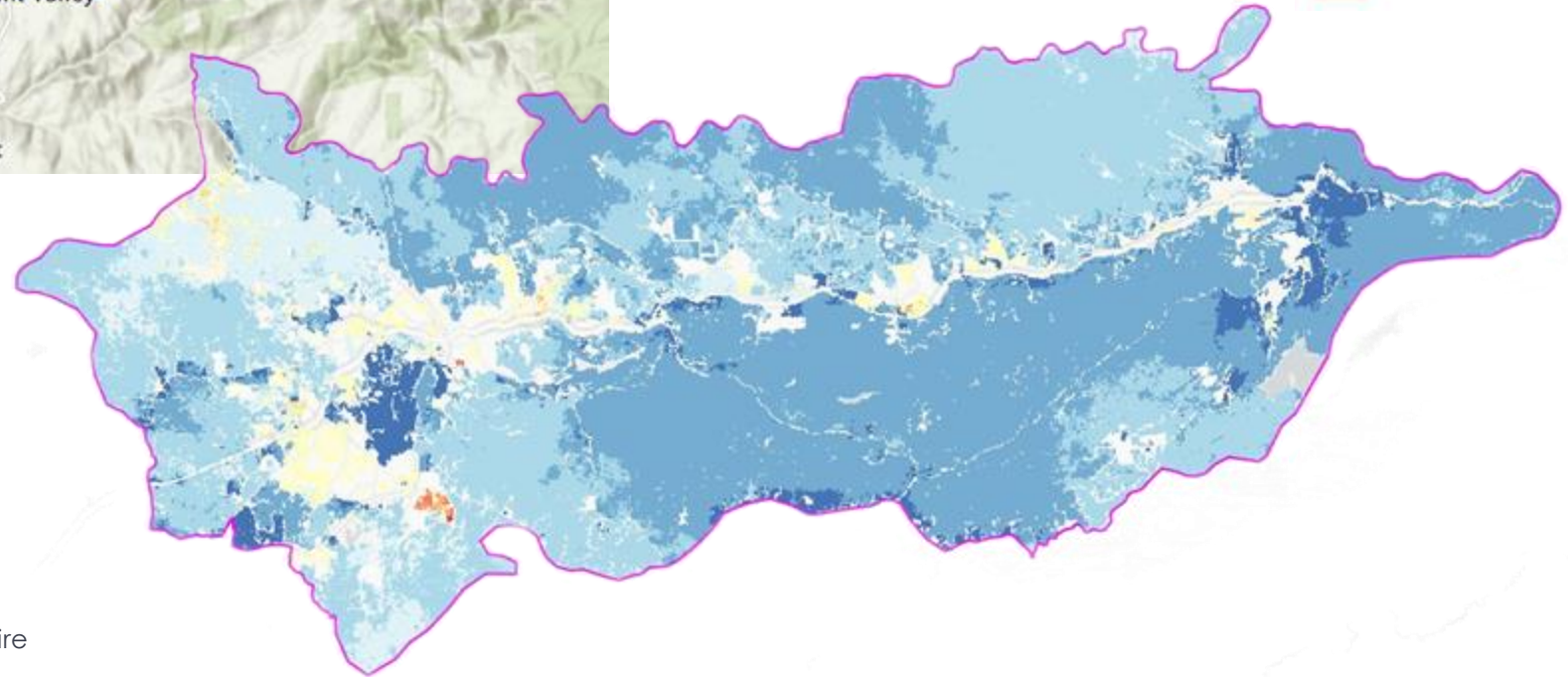
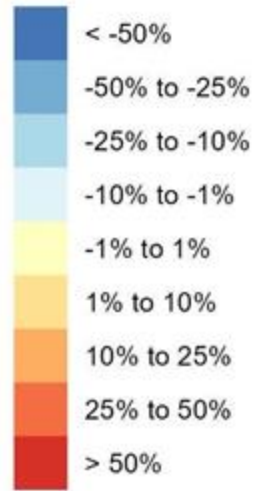
# Outcome-Based Change Metrics



# Treatment design



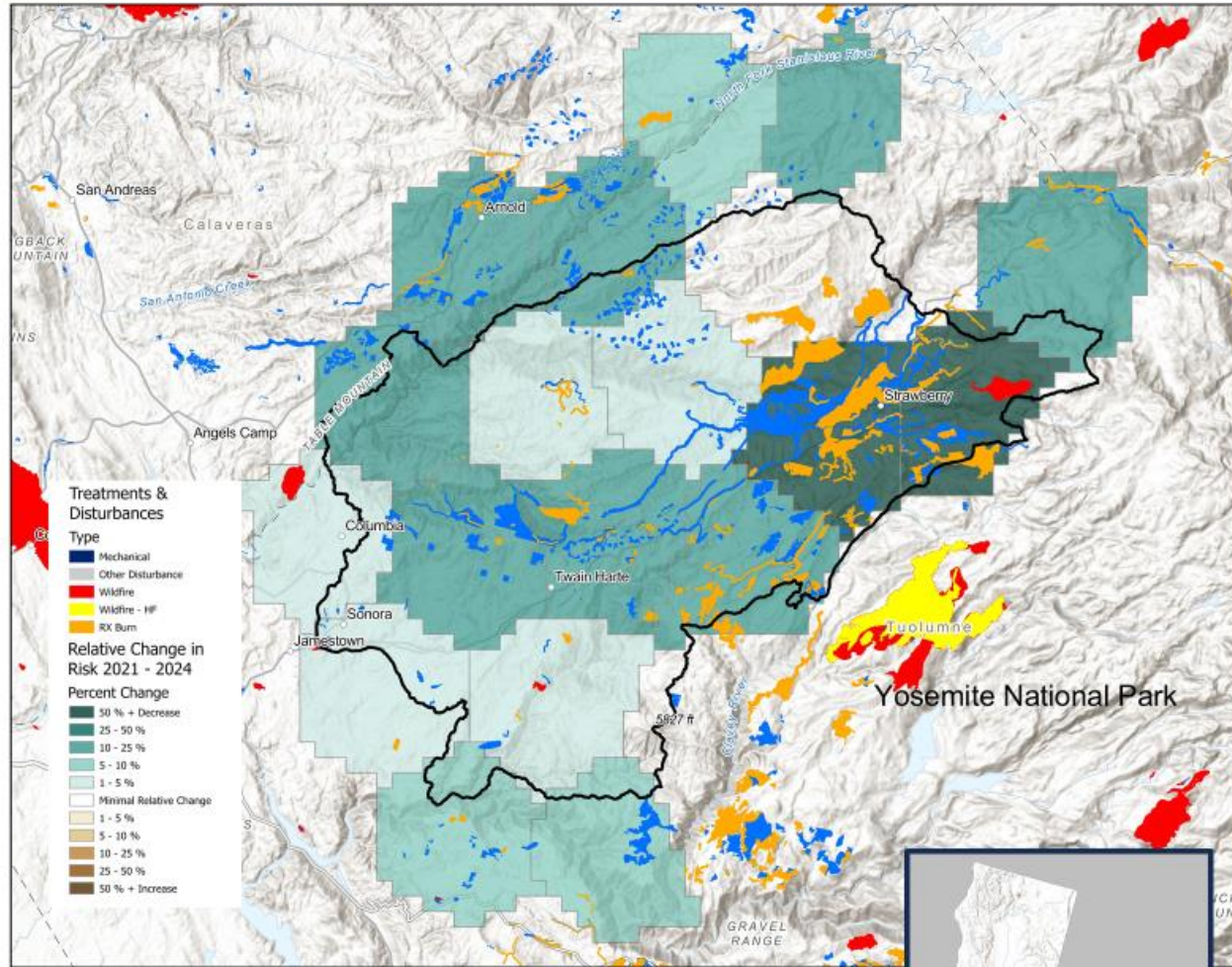
% change in  
**burn probability**  
in 2034



El Dorado RCD.  
Placerville, California. 2026

- Design and evaluation of **fuel treatment project**
- Forest growth & sequestration potential
  - Potential wildfire emissions
  - Effects of a fuel treatment project on wildfire behavior

## Stanislaus Landscape Example – FY24 Results\*



- **16% risk reduction to homes** (\$2.8 million avoided loss)
- **28% risk reduction to powerlines** (\$450,000 avoided loss)
- **23% risk reduction to communication sites** (\$159,000 avoided loss )
- **15% risk reduction to watersheds that provide drinking water** (\$4.8 million in avoided cost of sediment treatment)
- **6% increase in large tree area**
- **1,215 acres of late seral forests at reduced wildfire risk**
- **1,445-acre reduction in high stand densities**

Resulting from treatments, fire and disturbances between Jan 2021-end of annual reporting period (Sept 2024)

\*Preliminary results, subject to change.



# Stay Updated

## 2026 Meetings

- June 5: Sacramento
- October 1-2: Humboldt County
- December 11: Sacramento

## Sign up! [wildfiretaskforce.org](https://wildfiretaskforce.org)

- E-newsletter
- Governor's Monthly Update

## Follow!

- @wildfiretaskforce
- @CAwildfireTF

